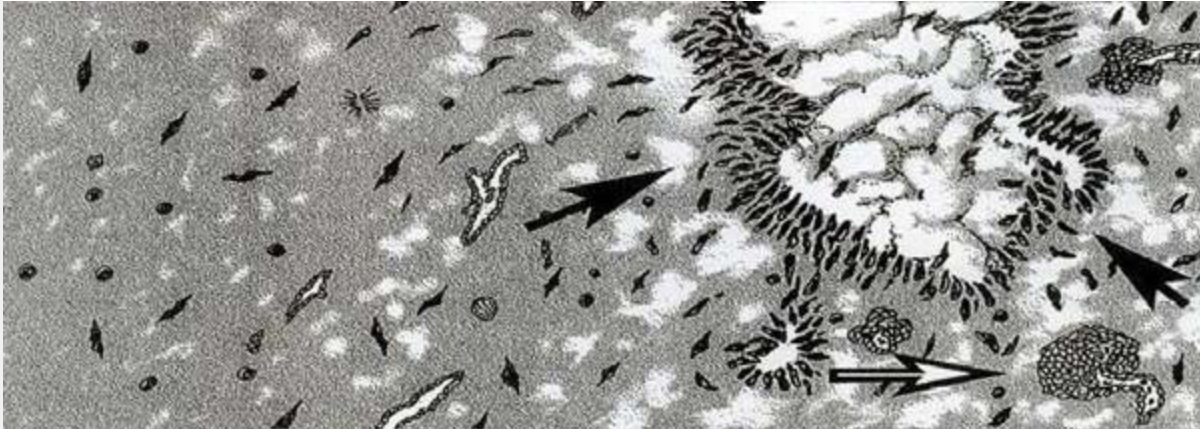




**EMORY**  
UNIVERSITY

**Department of  
Biomedical Informatics**  
Emory University School of Medicine



## CS Student Wins Big at Pathology Conference

Ablimit Aji received the award of Best Presentation within Scientific Imaging & Applications Development at Pathology Informatics Conference in Chicago, October 9-12. His talk was titled "[MIGIS: High Performance Spatial Query System for Analytical Pathology Imaging](#)." Aji is pursuing his PhD in Computer Science, and is supervised by BMI faculty member, Dr. Fusheng Wang.

## Monthly Tech Talk and CTIR

### Technical Talk

Nov. 15

CCI Classroom

12- 1 pm

Speaker: Joel Saltz

## Highlights

BMI/Winship recruiting new faculty member  
BMI, jointly with the Winship Cancer Institute, seeks to fill a faculty opening at the level of Associate or Assistant Professor. [Read more](#)

BMI's winter service project  
BMI/CCI is sponsoring a family from the Jerusalem House. Please drop off all wish list items in room #563. Contact Suzy Newton for details.

Clinical & Translational Informatics  
Rounds

Nov. 29      EUH Classroom B/C      12-1 pm

Speaker: Bryan Williams, PhD

Topic: Clinical Versus Research based  
Interpretation of Environmental Biomarkers

News

In Silico Award  
CCI was awarded a 4<sup>th</sup>  
year of funding for its In  
Silico Brain Tumor  
Research Center

Happy Holidays  
Emory will be closed for  
the Thanksgiving holiday  
Nov. 22-23

Contact

Department of Biomedical  
Informatics  
36 Eagle Row #563  
Atlanta, GA 30322  
404-727-4811

Contributions

If you have any newsletter  
items please email  
[suzy.newton@emory.edu](mailto:suzy.newton@emory.edu)

Find us online

[www.bmi.emory.edu](http://www.bmi.emory.edu)

If you no longer wish to receive these emails, simply click [unsubscribe](#).

This e-mail message (including any attachments) is for the sole use of the intended recipient(s) and may contain confidential and privileged information. If the reader of this message is not the intended recipient, you are hereby notified that any dissemination, distribution or copying of this message (including any attachments) is strictly prohibited.

If you have received this message in error, please contact the sender by reply e-mail message and destroy all copies of the original message (including attachments).