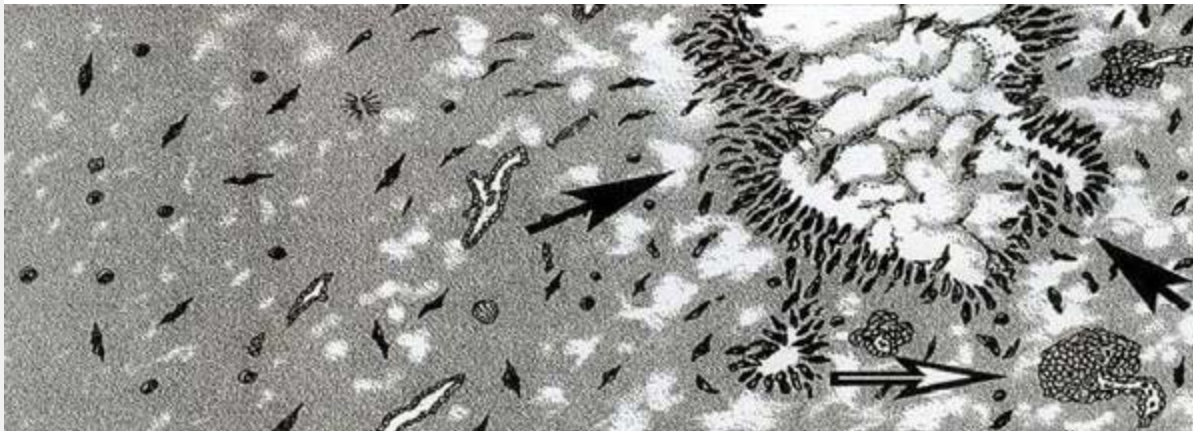




EMORY
UNIVERSITY

Department of
Biomedical Informatics

Emory University School of Medicine



BMI paper accepted at VLDB



The International Conference on Very Large Databases (VLDB) accepted a paper co-authored by Fusheng Wang, PhD, titled "Accelerating Pathology Image Data Cross Comparison on CPU-GPU Hybrid Systems." The paper describes hybrid CPU/GPU methods developed in order to cost-effectively compare algorithm results. These algorithms are essential to support digital pathology based biomedical research and computer aided diagnosis.

Monthly Tech Talk and CTIR

Technical Talk

Highlights

"This Month in AJP"
Our team's [In Silico paper](#) is featured in "This Month in AJP" and is the focus of a [commentary article](#) written in the American Journal of Pathology

BMI to help organize
XLDB Asia



Members of BMI faculty, in collaboration with Renmin University, are organizing the next Extremely Large Databases (XLDB) Conference to be held in Beijing, China, June 22-23, 2012

May 17 CCI Classroom 12- 1 pm

Speaker: Paul Spearman, MD
Title: "Children's Research Strategic Plan and research IT needs"

Clinical & Translational Informatics Rounds

May 24 EUH Classroom B/C 12-1 pm

Upcoming Events

Emory will be closed for Memorial Day on May 28

Contact

Department of Biomedical Informatics
36 Eagle Row #563
Atlanta, GA 30322
404-727-4811

Contributions

If you have any newsletter items please email suzy.newton@emory.edu

Find us online

www.bmi.emory.edu

If you no longer wish to receive these emails, simply click [unsubscribe](#).

This e-mail message (including any attachments) is for the sole use of the intended recipient(s) and may contain confidential and privileged information. If the reader of this message is not the intended recipient, you are hereby notified that any dissemination, distribution or copying of this message (including any attachments) is strictly prohibited.

If you have received this message in error, please contact the sender by reply e-mail message and destroy all copies of the original message (including attachments).