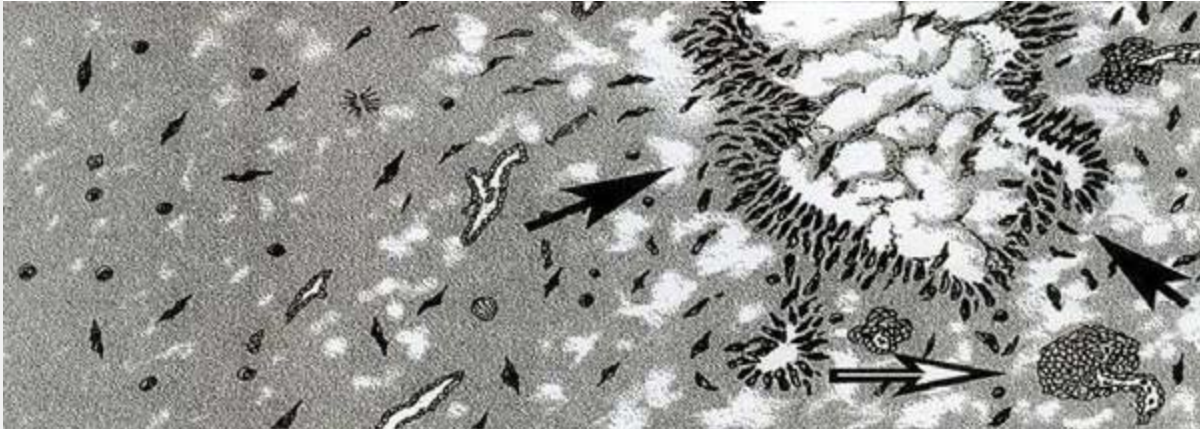




EMORY
UNIVERSITY

Department of
Biomedical Informatics
Emory University School of Medicine



BMI and Winship host Michael Krauthammer, MD, PhD



Dr. Michael Krauthammer, Associate Professor of Pathology from Yale University School of Medicine, will be visiting Emory this month. He will be presenting “Identification of Melanoma Driver Genes through Large-scale Exome Sequencing.” The talk will be held on Thursday, Feb. 14th, 11 am at Winship C5012.

Highlights

ACTSI's Big Bethel AME project
The Atlanta Clinical & Translational Science Institute (ACTSI) partnered with Big Bethel AME Church for a project aimed at providing a sustainable, community-based approach for diabetes research and management. [Read more](#)

News

Paper on [CPU-GPU Irregular Wavefront Propagation](#)

Monthly CTIR

Clinical & Translational Informatics Rounds

Feb. 28 EUH Classroom B/C 12-1 pm

Speaker: Andrew Post, MD, PhD

Algorithms accepted by
Parallel Computing

[CPU-GPU Analysis of
Large Microscopy
Image Datasets](#) to be

presented at 27th IEEE
International Parallel &
Distributed Processing
Symposium in Boston, MA

Contact

Department of Biomedical
Informatics
36 Eagle Row #563
Atlanta, GA 30322
404-727-4811

Contributions

If you have any newsletter
items please email
suzy.newton@emory.edu

Find us online

www.bmi.emory.edu

If you no longer wish to receive these emails, simply click [unsubscribe](#).

This e-mail message (including any attachments) is for the sole use of the intended recipient(s) and may contain confidential and privileged information. If the reader of this message is not the intended recipient, you are hereby notified that any dissemination, distribution or copying of this message (including any attachments) is strictly prohibited.

If you have received this message in error, please contact the sender by reply e-mail message and destroy all copies of the original message (including attachments).